

A woman with curly hair, wearing a dark teal long-sleeved top and dark shorts, is captured mid-jump over a large, light-brown rock. She is wearing bright orange and purple Hoka running shoes. The background is a bright blue sky with wispy white clouds. The overall mood is energetic and adventurous.

FALL
2022

PRODUCT ARCHITECTURE

HOKA was born from the search to solve a simple problem—to make running downhill easier. With this pioneering spirit, we continue to create solutions for all athletes seeking the ultimate ride experience. Each of our categories represent extraordinary ride characteristics only felt while wearing HOKA.

Welcome to GLIDE, FLY and SKY.





GLIDE

SIGNATURE CUSHION,
SMOOTH RIDE



FLY

RESPONSIVE CUSHION,
ENERGETIC RIDE



SKY

DISTINCT COMFORT,
VERSATILE TRACTION



THE HOKA EXPERIENCE

CUSHIONED MIDSOLE

MARSHMALLOW SOFTNESS

Ultralight and endlessly cushioned, HOKA midsoles offer shock absorption, comfort and support in varying degrees of thickness.



CUSHIONED MIDSOLE BENEFITS

- Premium shock absorption
- Superior comfort
- Performance on runs of all distances

META-ROCKER

THE WHEELS TO MOVE YOU FORWARD

Designed to drive runners forward, Meta-Rocker geometry complements the natural gait cycle and reduces the height differential between heel and toe.



META-ROCKER BENEFITS

- Supports runners' natural gait
- A smooth roll from impact to toe-off
- Designed to increase running efficiency

ACTIVE FOOT FRAME

THE BUCKET SEAT

The Active Foot Frame functions like the bucket seat in a racecar, cradling the heel and embedding the foot securely into the midsole.



ACTIVE FOOT FRAME BENEFITS

- Integrated stability within the shoe
- Adaptable to a wide range of feet and running styles
- A comfortable alternative to traditional post support

J-FRAME™

STABILITY WITH FREEDOM

Designed to combat overpronation, J-Frame™ innovation delivers extended support with a firmer foam on the medial side where the foot typically rolls inward.



J-FRAME™ BENEFITS

- Designed to combat overpronation
- Guides foot without rigid, unforgiving materials
- Delivers stability while maintaining a cushioned, lightweight ride

PROFLY™

INTELLIGENT CUSHIONING

A two-part midsole that pairs a soft top layer of foam with a responsive bottom layer of foam to deliver an energetic ride.



PROFLY™ BENEFITS

- Softer top foam delivers quintessential HOKA cushioning
- Firmer bottom foam provides propulsive toe-offs
- Combined, they afford a fast, comfortable ride

CARBON FIBER PLATE

AGGRESSIVE PROPULSION

Designed to provide a propulsive ride, the carbon fiber plate curls under toes to deliver a smooth transition through the gait cycle.



CARBON FIBER PLATE BENEFITS

- Inherently light, stiff and responsive
- Allows stability and power in push-off
- Delivers a smooth transition through the gait cycle

HUBBLE® HEEL

EFFORTLESSLY SMOOTH TRANSITIONS

Building on HOKA heritage, the extended HUBBLE® heel is designed to limit impact on the body and create smoother heel-to-toe transitions.



HUBBLE® HEEL BENEFITS

- Designed to limit impact on the body
- Engineered for an exceptionally smooth ride
- Designed to deliver efficient heel-to-toe transitions

MATERIALS

We recognize producing and selling footwear and apparel has a **global impact**, and it carries an obligation to advance sustainable business practices and **good business ethics**. For more information on our efforts toward more **sustainable manufacturing and business practices**, as well as more information on **corporate, human and environmental responsibility** measures being taken by HOKA and Deckers Brands, visit hokaoneone.com/corporate-responsibility.

GORE-TEX

A performance-driven gold standard, GORE-TEX product technology provides a breathable membrane designed to keep feet dry and comfortable in a variety of conditions.

WHEN AND WHY WE USE IT

We use GORE-TEX product technology in select HOKA trail shoes and hiking boots that need to perform in wet conditions. We're big fans of GORE-TEX not only for its functionality but also for the brand's commitment to performance and innovation.

GORE-TEX FOOTWEAR FABRIC WITH RECYCLED TEXTILE

GORE-TEX footwear fabric with recycled textile is an environmentally conscious approach to waterproofing that utilizes an ePTFE (expanded polytetrafluoroethylene) film or membrane, uses post-consumer recycled fibers in its backer, and uses PFC free chemicals.

WHEN AND WHY WE USE

We prefer this innovative technology because GORE-TEX fabric with leaf booties feature 45% recycled content by weight and a PFC-free DWR finish to seal out moisture and enhance breathability. The membrane offers an environmentally preferred approach to waterproof technologies while preserving the high standard of performance for which GORE-TEX is known.

MATRYX®

MATRYX® is a lightweight, extra-durable woven material with hydrophobic properties. It's abrasion resistant to help you get the most out of your runs.

WHEN AND WHY WE USE IT

We use MATRYX® in the upper of select premium shoes that need more lockdown and protection against the elements. MATRYX® is a favorite of ours because it's unlike any other material out there. It's ridiculously light for how durable it is, and it performs in various conditions.

VIBRAM® MEGAGRIP

Vibram® Megagrip is a high-performance, extra-sticky rubber. It provides grip and traction on wet or dry surfaces and is the industry leader in durable rubber for outdoor products.

WHEN AND WHY WE USE IT

We include Vibram® Megagrip as the outsole for select trail shoes and hiking boots that need intense grip on a variety of surfaces. We chose Vibram® Megagrip because it provides grip in less-than-ideal conditions and lends stability on unpredictable terrain.

VIBRAM® MEGAGRIP WITH LITEBASE CONSTRUCTION

Vibram® Megagrip with Litebase construction is a high-performance rubber that reduces outsole weight while maintaining performance. This technology reduces rubber outsole thickness about 40-50% and reduces the weight of tread about 25-30%.

WHEN AND WHY WE USE IT

We use Vibram® Megagrip with Litebase construction as the outsole for select SKY Trail and SKY Hike products that need high performance traction. The reduction of the thickness of the rubber bottom does not affect the sole nor the risk of laceration. Vibram® Megagrip with Litebase construction is unique because it keeps the same characteristics of traction, duration, and wear resistance while also maintaining a lighter weight.

RUBBERIZED FOAM

Rubberized Foam is a proprietary blend of rubber and EVA. It features a low compression set and is resilient, providing an extra-springy feel.

WHEN AND WHY WE USE

We use Rubberized Foam on shoes that need a more energized and resilient ride. We often use it in the outsole because it's lighter than traditional rubber, more durable than EVA and provides a unique ride.

PRODUCT CLASSIFICATION

 **GLIDE**

 **FLY**

GLIDE STABILITY	GLIDE NEUTRAL	GLIDE RECOVERY	FLY RUN	RACE
 BONDI X	 GAVIOTA 4	 ORA LUXE	 CARBON X 3	 ROCKET X
 BONDI 8	 ARAHI 6	 ORA RECOVERY SLIDE	 MACH 5	 CIELO X MD
 CLIFTON 8		 ORA RECOVERY FLIP		 CIELO X LD
 RINCON 3				
 KAWANA				
 SOLIMAR				
 BONDI SR				

Product measurements in this catalog are based on men's size 9 and women's size 7. Variations will occur based on actual size and production and should be used for general comparison purposes only.



SKY RUN



TECTON X



MAFATE SPEED 4



ZINAL



STINSON ATR 6



SPEEDGOAT 5



SPEEDGOAT 5 GTX



CHALLENGER ATR 6



CHALLENGER ATR 6 GTX



TORRENT 2

SKY HIKE



TENNINE HIKE GTX



TRAIL CODE GTX



KAHA 2 GTX



KAHA 2 LOW GTX



SPEEDGOAT 5 MID GTX



ANACAPA MID GTX



ANACAPA LOW GTX



ANACAPA BREEZE LOW



HOPARA





GLIDE is a collection of shoes that deliver **our smoothest, softest ride**. Built with the original HOKA principles of **maximal cushion** and **minimal weight**, this category features plush cushion for any pace. **GLIDE** includes **neutral, stability** and **recovery** models, so no matter the athlete, they can go the distance in comfort. An effortless ride from start to finish, these shoes are your **go-to for everyday miles**. Ready, steady, **GLIDE**.

BONDI 8

THE ULTRA-CUSHIONED GAME-CHANGER

GEOMETRY	W 31mm heel 27mm forefoot
	M 33mm heel 29mm forefoot
WEIGHTS	W 8.9 oz. 252g
	M 10.8 oz. 307g
SIZES	W 5-11, 12(B); WIDE 5-11, 12(D)
	M 7-13, 14, 15, 16(D); WIDE 7-13, 14, 15(2E); X-WIDE 8-13, 14(4E)
PRICING	\$165 H578

One of the hardest working shoes in the HOKA lineup, the **Bondi** takes a bold step forward this season, reworked with **softer, lighter foams** and a brand-new **extended heel geometry**. Taking on a billowed effect, the rear **crash pad** affords an incredibly soft and balanced ride from heel strike to forefoot transition.

How it's different: Amplifying core performance features, the Bondi 8 is upgraded with an extended heel, brand-new foam, and pillowed tongue.

Why you'll love it: The perfect blend of soft and bouncy, the Bondi 8's superior cushioning provides a distinctly different ride.



UPPER

- Vegan
- Engineered mesh
- Partially gusseted tongue
- Recycled content lining mesh
- Ortholite® hybrid (recycled) sockliner



MIDSOLE

- All-new lightweight, resilient foam
- Heel pull tab



OUTSOLE

- Durabrasion rubber outsole
- Zonal rubber placement for weight savings



WOMEN

COMMS COLOR

1127952 SSCA

Summer Song /
Country Air

Avail. July **NEW**

1127954 SSCA

Summer Song /
Country Air WIDE

Avail. July **NEW**



1127952 HMLR

Harbor Mist / Lunar Rock

Avail. July **NEW**

1127954 HMLR

Harbor Mist /
Lunar Rock WIDE

Avail. July **NEW**



1127952 SCPP

Shell Coral /
Peach Parfait

Avail. July **NEW**



1127952 BWHT

Black / White

Avail. July **NEW**

1127954 BWHT

Black / White WIDE

Avail. July **NEW**



1127952 BGWN

Beautyberry /
Grape Wine

Avail. August **NEW**



1127952 OSBB

Outer Space /
Bellwether Blue

Avail. August **NEW**

1127954 OSBB

Outer Space /
Bellwether Blue WIDE

Avail. August **NEW**



1127952 BBLC

Black / Black

Avail. August **NEW**

1127954 BBLC

Black / Black WIDE

Avail. August **NEW**



GLIDE NEUTRAL

MEN

COMMS COLOR

1123202 GBMS

Goblin Blue /
Mountain Spring

Avail. July **NEW**

1127953 GBMS

Goblin Blue /
Mountain Spring WIDE

Avail. July **NEW**

1127955 GBMS

Goblin Blue /
Mountain Spring X-WIDE

Avail. July **NEW**



1123202 PBAY

Puffin's Bill /
Amber Yellow

Avail. July **NEW**

1127953 PBAY

Puffin's Bill /
Amber Yellow WIDE

Avail. July **NEW**



1123202 SHMS

Sharkskin /
Harbor Mist

Avail. July **NEW**

1127953 SHMS

Sharkskin /
Harbor Mist WIDE

Avail. July **NEW**

1127955 SHMS

Sharkskin /
Harbor Mist X-WIDE

Avail. July **NEW**



1123202 BWHT

Black / White

Avail. July **NEW**

1127953 BWHT

Black / White WIDE

Avail. July **NEW**



1123202 BBBG

Bellwether Blue /
Bluing

Avail. August **NEW**



1123202 ACTL

Anthracite / Castlerock

Avail. August **NEW**

1127953 ACTL

Anthracite /
Castlerock WIDE

Avail. August **NEW**



1123202 BEPM

Butterfly /
Evening Primrose

Avail. August **NEW**



1123202 BBLC

Black / Black

Avail. August **NEW**

1127953 BBLC

Black / Black WIDE

Avail. August **NEW**

1127955 BBLC

Black / Black X-WIDE

Avail. August **NEW**



CLIFTON 8

SMOOTH ON DOWN THE ROAD

GEOMETRY	W 31mm heel 27mm forefoot
	M 33mm heel 29mm forefoot
WEIGHTS	W 8.9 oz. 252g
	M 10.8 oz. 307g
SIZES	W 5-11, 12(B); WIDE 5-11, 12(D)
	M 7-13, 14, 15, 16(D); WIDE 7-13, 14, 15(2E)
PRICING	\$140 H057



UPPER

- Breathable mesh upper
- Gusseted tongue



MIDSOLE

- EVA foam
- Early stage Meta-Rocker
- Extended pull tab



OUTSOLE

- High-abrasion rubber
- Flat-waisted geometry

The latest in the award-winning Clifton franchise, the **Clifton 8** continues to deliver the perfect combination of **soft and light**. Crafted with a lighter, more responsive midsole and the same ride characteristics, the Clifton 8 features a streamlined silhouette and **updated upper** made from engineered mesh.

Why you'll love it: We kept what you love and updated what you didn't.



WOMEN

1119394 SSIF

Summer Song / Ice Flow
Avail. June **NEW**



1121375 SSIF

Summer Song / Ice Flow WIDE
Avail. June **NEW**

1119394 GWBY

Grape Wine / Beautyberry
Avail. August **NEW**



1121375 GWBY

Grape Wine / Beautyberry WIDE
Avail. August **NEW**

1119394 BDBW

Blanc de Blanc / White
Avail. June

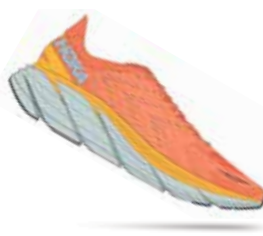


1121375 BDBW

Blanc de Blanc / White WIDE
Avail. June

1119394 SBSCR

Sun Baked / Shell Coral
Avail. June **NEW**



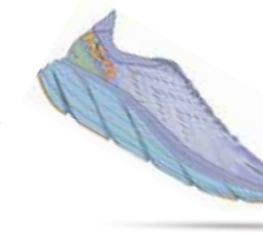
1121375 SBSCR

Sun Baked / Shell Coral WIDE
Avail. June **NEW**

MARBLD PACK*

1119394 BL5G

Baby Lavender / Smoke Green
Avail. September **NEW**
*See p.29.



1119394 WWH

White / White
Avail. June



1119394 ACPP

Anthracite / Copper
Avail. June **NEW**



1119394 BFPA

Blue Fog / Plein Air
Avail. June



1121375 BFPA

Blue Fog / Plein Air WIDE
Avail. June

1119394 BWHT

Black / White
Avail. June



1121375 BWHT

Black / White WIDE
Avail. June

MEN

1119393 GBMS

Goblin Blue / Mountain Spring
Avail. June **NEW**



1121374 GBMS

Goblin Blue / Mountain Spring WIDE
Avail. June **NEW**

1119393 ACTL

Anthracite / Castlerock
Avail. June **NEW**



1121374 ACTL

Anthracite / Castlerock WIDE
Avail. June **NEW**

1119393 RYMZ

Radiant Yellow / Maize
Avail. June **NEW**



1121374 RYMZ

Radiant Yellow / Maize WIDE
Avail. June **NEW**

1119393 BSSNG

Butterfly / Summer Song
Avail. June **NEW**



OMNI PACK*

1119393 NCBDDB

Nimbus Cloud / Blanc de Blanc
Avail. September **NEW**
*See p.29.



1119393 BCBT

Blue Coral / Butterfly
Avail. June



1121374 BCBT

Blue Coral / Butterfly WIDE
Avail. June

1119393 LRNC

Lunar Rock / Nimbus Cloud
Avail. June



1121374 LRNC

Lunar Rock / Nimbus Cloud WIDE
Avail. June

1119393 BWHT

Black / White
Avail. June



1121374 BWHT

Black / White WIDE
Avail. June

1119393 BBLC

Black / Black
Avail. June



RINCON 3

FEEL THE SPEED OF LIGHT

GEOMETRY	W 26mm heel 21mm forefoot
	M 29mm heel 24mm forefoot
WEIGHTS	W 7.2 oz. 204g
	M 7.7 oz. 218g
SIZES	W 5-11, 12(B); WIDE 5-11, 12(D)
	M 7-13, 14, 15, 16(D); WIDE 7-13, 14, 15(2E)
PRICING	\$125 H576



UPPER

- Vegan
- Mesh upper
- Asymmetrical tongue
- Molded EVA sockliner



MIDSOLE

- Compression molded EVA midsole
- Early stage Meta-Rocker



OUTSOLE

- Light zonal rubber

Delivering the best cushion-to-weight ratio on the market, the **Rincon 3** returns in a stupefyingly light silhouette. This redesign features an asymmetrical tongue, thinner pull tab and a vented-mesh upper for **ultimate breathability**. Our **extra-light** midsole foam sports aggressive cutouts and enhanced rubber coverage for improved durability.

Why you'll love it: Save on weight, maximize on mileage.

WOMEN

1119396 SCPP

Shell Coral /
Peach Parfait
Avail. June **NEW**



1121371 SCPP

Shell Coral /
Peach Parfait WIDE
Avail. June **NEW**

1119396 BSSNG

Butterfly / Summer Song
Avail. June **NEW**



1121371 BSSNG

Butterfly /
Summer Song WIDE
Avail. June **NEW**

1119396 BKPNK

Beautyberry /
Knockout Pink
Avail. August **NEW**



1121371 BKPNK

Beautyberry /
Knockout Pink WIDE
Avail. August **NEW**

1119396 BWHT

Black / White
Avail. June



1121371 BWHT

Black / White WIDE
Avail. June

MEN

1119395 FAYW

Fiesta / Amber Yellow
Avail. June **NEW**



1121370 FAYW

Fiesta / Amber
Yellow WIDE
Avail. June **NEW**

1119395 MSSS

Mountain Spring /
Summer Song
Avail. June **NEW**



1121370 MSSS

Mountain Spring /
Summer Song WIDE
Avail. June **NEW**

1119395 BSBB

Bluing / Scuba Blue
Avail. August **NEW**



1121370 BSBB

Bluing /
Scuba Blue WIDE
Avail. August **NEW**

1119395 BWHT

Black / White
Avail. June



1121370 BWHT

Black / White WIDE
Avail. June



KAWANA

SOFT. SMOOTH. BLISS.

GEOMETRY	W 27mm heel 22mm forefoot
	M 30mm heel 25mm forefoot
WEIGHTS	W 8.4 oz. 237g
	M 10.0 oz. 283g
SIZES	W 5-11(B)
	M 7-13, 14(D)
PRICING	\$140 H057

Earning its moniker from the Gold Coast's famous beach break, the **Kawana** continues to push the boundaries of HOKA foams and geometries. Breaking the mold with a **lively new foam** that provides solid rebound without packing out, this accessible trainer delivers an incredibly well-balanced ride. Sporting a modified **crash pad** with **SwallowTail™ geometry**, the Kawana's beveled heel creates a broader, flatter surface designed for smoother heel strikes.

Why you'll love it: It's endlessly adaptable and effortlessly smooth.

WOMEN

1123164 BCPPR

Black / Copper
Avail. June **NEW**



1123164 PPSC

Peach Parfait / Shell Coral
Avail. June **NEW**



MARBLED PACK *

1123164 SSBLV

Summer Song /
Baby Lavender
Avail. September **NEW**
*See p.29.



1123164 BWHT

Black / White
Avail. June



MEN

1123163 MSGB

Mountain Spring /
Goblin Blue
Avail. June **NEW**



OMNI PACK *

1123163 IFGB

Ice Flow / Goblin Blue
Avail. September **NEW**
*See p.29.



1123163 BWHT

Black / White
Avail. June



UPPER

- Vegan
- Engineered recycled jacquard mesh
- Anatomical Achilles construction



MIDSOLE

- New, lively CMEVA midsole foam
- SwallowTail™ heel geometry
- Early stage Meta-Rocker



OUTSOLE

- Durabrasion rubber

SOLIMAR

NIMBLE. ADAPTIVE. EMPOWERING.

GEOMETRY	W 24mm heel 18mm forefoot
	M 26mm heel 20mm forefoot
WEIGHTS	W 6.7 oz. 191g
	M 8.5 oz. 240g
SIZES	W 5-11(B); WIDE 5-11(D)
	M 7-13, 14(D); WIDE 7-13, 14(2E)
PRICING	\$125 H576

Mirroring the smooth rolling pattern of SoCal's **Solimar** beach, this streamlined trainer offers a sublime ride for everyday miles. Engineered with an approachable stack height, **balanced midsole** and **extended crash pad**, this adaptable silhouette is equipped with extra rubber to combat high-wear areas. An effortless daily runner, the Solimar is finished with an extended heel pull for easy on and off.

Why you'll love it: Whether walking, running, or hitting the gym, the Solimar can handle anything you throw at it.

WOMEN

COMMS COLOR

1123075 FFBT

Festival Fuchsia / Butterfly
Avail. June **NEW**



1123075 BDBBG

Blanc de Blanc / Blue Glass
Avail. June **NEW**



1123075 BWHT

Black / White

Avail. June **NEW**



1123096 BWHT

Black / White WIDE

Avail. June **NEW**



MARBLD PACK *

1123075 IFAY

Ice Flow / Amber Yellow
Avail. September **NEW**

*See p.29.



MEN

COMMS COLOR

1123074 BCBT

Blue Coral / Butterfly
Avail. June **NEW**



1123074 HMCS

Harbor Mist / Castlerock
Avail. June **NEW**



1123074 BWHT

Black / White

Avail. June **NEW**



1123090 BWHT

Black / White WIDE

Avail. June **NEW**



OMNI PACK *

1123074 BDBW

Blanc de Blanc / White
Avail. September **NEW**

*See p.29.



GLIDE NEUTRAL



UPPER

- Vegan
- Stretchy, recycled content mesh
- Anatomical Achilles construction
- Extended heel pull



MIDSOLE

- Molded EVA sockliner
- CMEVA midsole
- Late stage Meta-Rocker



OUTSOLE

- High abrasion rubber outsole

BONDI X

NEXT LEVEL FOR ALL

GEOMETRY	W 31mm heel 26mm forefoot
	M 33mm heel 28mm forefoot
WEIGHTS	W 9.0 oz. 257g
	M 11.0 oz. 300g
SIZES	W 5-11(B)
	M 7-13, 14(D)
PRICING	\$215 H5711

A **maximally cushioned** road shoe designed to go the distance, the game-changing **Bondi X** is spring-loaded with our propulsive **carbon-fiber plate**. Delivering the soft, balanced ride that's become a hallmark of the Bondi franchise, this propulsive silhouette enlists an **extended rocker** for efficient transitions and smooth toe-offs.

Why you'll love it: Our softest foam paired with a progressive upper with embroidered TPU yarn is a can't-miss fit.

WOMEN

1113513 CPPF

Camellia /
Peach Parfait
Avail. June **NEW**



1113513 BWHT

Black / White
Avail. June



MEN

1113512 FAYW

Fiesta / Amber Yellow
Avail. June **NEW**



1113512 BWHT

Black / White
Avail. June



UPPER

- Vegan
- Mesh upper with 3D hotmelt yarns
- Perforated EVA tongue
- Ortholite® sockliner



MIDSOLE

- Heel pull tab
- Carbon fiber plate
- Compression molded EVA



OUTSOLE

- Early stage Meta-Rocker for up-tempo ride
- Zonal rubber

BONDI SR

COMFORT THAT WORKS OVERTIME

GEOMETRY	W 31mm heel 25mm forefoot
	M 34mm heel 28mm forefoot
WEIGHTS	W 11.5 oz. 326g
	M 14.0 oz. 397g
SIZES	W 5-11(B); WIDE 5-11(D)
	M 7-13, 14, 15(D); WIDE M 7-13, 14, 15(2E)
PRICING	\$175 H578

The **Bondi SR** takes the most cushioned shoe in the HOKA road-shoe lineup and reworks the silhouette to handle the demands of daily life. Updated with **water-resistant leather**, a slip-resistant outsole and EVA midsole to ensure **all-day cushion**, this workplace warrior features an ultra-grippy, full ground contact rubber that stands up to the demands of the service industry and medical field alike.

Why you'll love it: Find constant comfort wherever you are—even at work.

WOMEN

1110521 BBLC

Black / Black

Avail. June

1129351 BBLC

Black / Black WIDE

Avail. June

1110521 WHT

White

Avail. June

1129351 WHT

White WIDE

Avail. June

MEN

1110520 BBLC

Black / Black

Avail. June

1129350 BBLC

Black / Black WIDE

Avail. June



UPPER

- Water-resistant leather
- Memory foam collar
- Tongue lining wrap



MIDSOLE

- EVA midsole
- Early stage Meta-Rocker



OUTSOLE

- Slip-resistant rubber and tread

ARAHI 6

LIGHTWEIGHT. STABLE. UNMATCHED.

GEOMETRY	W 27mm heel 22mm forefoot
	M 29mm heel 24mm forefoot
WEIGHTS	W 7.6 oz. 216g
	M 9.3 oz. 264g
SIZES	W 5-11, 12(B); WIDE 5-11, 12(D)
	M 7-13, 14, 15(D); WIDE 7-13, 14, 15(2E)
PRICING	\$140 H057



UPPER

- Vegan
- Recycled content mesh lining
- Plush tongue
- Extended heel pull



MIDSOLE

- Ortholite® sockliner
- CMEVA midsole
- Early stage Meta-Rocker
- J-Frame™ midsole support



OUTSOLE

- Zonal rubber
- Durabrasion rubber

Surprisingly light for a stability shoe, the Arahi returns, grounded in the same stabilizing J-Frame™ as its predecessor. Boasting a seemingly contradictory combination of **maximal cushioning** and **minimal weight**, it's been refined with a **pull tab** and **mesh upper** with zones of breathability. Remarkably light and exceptionally comfortable, the **Arahi 6** is a lively support shoe for a wide range of runners.

How it's different: Plusher tongue, lighter upper, new midsole color blockings.

Why you'll love it: The Arahi 6 delivers the perfect balance of plushness and support.

WOMEN

1123195 NCBDB

Nimbus Cloud /
Blanc de Blanc

Avail. June **NEW**

1123197 NCBDB

Nimbus Cloud /
Blanc de Blanc WIDE

Avail. June **NEW**



1123195 SBSCR

Sun Baked /
Shell Coral

Avail. June **NEW**



1123195 GWBY

Grape Wine /
Beautyberry

Avail. August **NEW**



1123195 PABF

Plein Air / Blue Fog

Avail. June

1123197 PABF

Plein Air /
Blue Fog WIDE

Avail. June



1123195 BWHT

Black / White

Avail. June

1123197 BWHT

Black / White WIDE

Avail. June



MEN

1123194 SSMS

Summer Song /
Mountain Spring

Avail. June **NEW**



1123194 FAYW

Fiesta / Amber Yellow

Avail. June **NEW**



1123194 OSBB

Outer Space /
Bellwether Blue

Avail. August **NEW**

1123196 OSBB

Outer Space /
Bellwether Blue WIDE

Avail. August **NEW**



1123194 BGBCR

Blue Graphite /
Blue Coral

Avail. June

1123196 BGBCR

Blue Graphite /
Blue Coral WIDE

Avail. June



1123194 BWHT

Black / White

Avail. June

1123196 BWHT

Black / White WIDE

Avail. June



GAVIOTA 4

STABLE. PLUSH. SUPPORTIVE.

GEOMETRY	W 29mm heel 24mm forefoot
	M 31mm heel 26mm forefoot
WEIGHTS	W 9.3 oz. 265g
	M 11.4 oz. 322g
SIZES	W 5-11, 12(B); WIDE 5-11, 12(D)
	M 7-13, 14, 15(D); WIDE 7-13, 14, 15(2E)
PRICING	\$170 H009



UPPER

- Vegan
- Breathable engineered mesh
- Recycled polyester laces
- Heel pull tab
- Midfoot H-Frame



MIDSOLE

- CMEVA midsole
- J-Frame™ midsole support
- Late stage Meta-Rocker



OUTSOLE

- Rubberized EVA
- Durabrasion rubber

A premium stability shoe, the **Gaviota 4** returns this season, as plush as ever. Delivering the same **maximal cushioning** and J-Frame™ enhanced support, it's been reworked with a plusher collar and tongue. Updated with a **hidden eyestay** reinforcement and single-sided **tongue gusset** to reduce slippage, no detail has been overlooked.

How it's different: Plusher, foot-hugging comfort and a secure fit.

Why you'll love it: The support you need. The cushion you crave.

WOMEN

1123199 SCPP

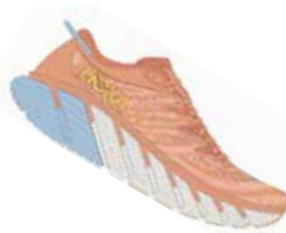
Shell Coral /
Peach Parfait

Avail. June **NEW**

1123201 SCPP

Shell Coral /
Peach Parfait WIDE

Avail. June **NEW**



1123199 BFPA

Blue Fog / Plein Air

Avail. June

1123201 BFPA

Blue Fog /
Plein Air WIDE

Avail. June



1123199 BWHT

Black / White

Avail. June

1123201 BWHT

Black / White WIDE

Avail. June



MEN

1123198 CARC

Castlerock / Anthracite

Avail. June **NEW**



1123198 HMBT

Harbor Mist /
Butterfly

Avail. June

1123200 HMBT

Harbor Mist /
Butterfly WIDE

Avail. June



1123198 BBGP

Bluing / Blue Graphite

Avail. June

1123200 BBGP

Bluing / Blue
Graphite WIDE

Avail. June



1123198 BWHT

Black / White

Avail. June

1123200 BWHT

Black / White WIDE

Avail. June



ORA LUXE

SLIP ON. ZEN OUT.

GEOMETRY U 31mm heel 25mm forefoot

WEIGHTS U 7.4 oz. 208g

SIZES U 3/5-14/16 M/W whole

PRICING \$80 H004

An elevated take on the classic Ora Slide, the **ORA Luxe** makes its debut this season, delivering the same post-run relief as the original icon. Designed to tread lighter with a **sugarcane EVA midsole**, we've enlisted an adjustable **Ariaprene® strap** that combines **foam** and **mesh** to deliver one ultra-light recovery slide.

Why you'll love it: Perfectly plush and endlessly versatile, the Luxe is everything you love about the ORA Slide, just updated with breathable mesh and enhanced adjustability.

UNISEX

COMMS COLOR

1134150 WCLL

White / Camellia

Avail. June **NEW**



1134150 WWH

White / White

Avail. June **NEW**



1134150 BBLC

Black / Black

Avail. June **NEW**



OMNI PACK*

1134150 FAYW

Fiesta / Amber Yellow

Avail. September **NEW**

*See p.29.



MARBLED PACK*

1134150 SSAY

Summer Song /

Amber Yellow

Avail. September **NEW**

*See p.29.



UPPER

- Ariaprene® canopy with a mesh and foam
- Adjustable velcro straps



MIDSOLE

- Sugarcane EVA midsole



OUTSOLE

- IMEVA outsole



ORA RECOVERY FLIP

POST RUN BLISS

GEOMETRY	W 31mm heel 25mm forefoot
	M 33mm heel 27mm forefoot
WEIGHTS	W 4.5 oz. 128g
	M 5.8 oz. 164g
SIZES	W 5-11 whole
	M 7-14 whole
PRICING	\$55 H572

You've just finished a long run or grueling race and, simply put, your feet need some TLC. Enter the **Ora Recovery Flip**. We put a HOKA **oversized midsole** and our **Meta-Rocker** geometry into a flip flop design and love the result. **Comfort and support** when and where you need them.

Why you'll love it: Slip into spa-like comfort anytime.

WOMEN

1117910 SSAY

Summer Song /
Amber Yellow
Avail. June **NEW**



1117910 FCST

Fiesta / Castlerock
Avail. June **NEW**



1117910 BDGGR

Black / Dark Gull Gray
Avail. June



MEN

1099675 FAYW

Fiesta / Amber Yellow
Avail. June **NEW**



1099675 SBBB

Scuba Blue /
Bellwether Blue
Avail. June **NEW**



1099675 BDGGR

Black / Dark Gull Gray
Avail. June



UPPER

- Vegan
- Soft EVA upper



MIDSOLE

- Early stage Meta-Rocker
- Dual layer construction
- EVA midsole



OUTSOLE

- Strategic groove placement

ORA RECOVERY SLIDE

POST RUN BLISS

GEOMETRY U 31mm heel 25mm forefoot

WEIGHTS U 5.1 oz. 145g

SIZES U 3/5-14/16 M/W whole

PRICING \$55 H572

You've just finished a long run or grueling race and, simply put, your feet need some TLC. Enter the **Ora Recovery Slide**. We put a HOKA **oversized midsole** and our *Meta-Rocker* geometry into a slide design and love the result. **Comfort and support** when and where you need them.

Why you'll love it: Slide into spa-like comfort anytime.

UNISEX

1134527 AYSC

Amber Yellow /
Shell Coral
Avail. June **NEW**



1134527 WWH

White / White
Avail. June **NEW**



1134527 BRYW

Butterfly /
Radiant Yellow
Avail. June **NEW**



1134527 BLK

Black
Avail. June **NEW**



1134527 FCST

Fiesta / Castlerock
Avail. June **NEW**



1134527 SBBS

Scuba Blue /
Bellwether Blue
Avail. June **NEW**



UPPER

- Vegan
- Soft EVA upper



MIDSOLE

- Early stage Meta-Rocker
- Dual layer construction
- EVA midsole



OUTSOLE

- Strategic groove placement



MARBLED PACK

Designed to mimic an aerial landscape, all outsoles in the Marbled Collection feature a psychedelic swirl of pastel hues. A fresh color drop that bridges summer and fall seasons, this lively assortment works across high-impact activities and low-key leisure alike.

KAWANA

1123164 SSBLV

Women's

Summer Song / Baby Lavender

Avail. September **NEW**



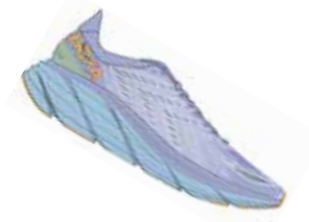
CLIFTON 8

1119394 BLSG

Women's

Baby Lavender / Smoke Green

Avail. September **NEW**



SOLIMAR

1123075 IFAY

Women's

Ice Flow / Amber Yellow

Avail. September **NEW**



ORA LUXE

1134150 SSAY

Unisex

Summer Song / Amber Yellow

Avail. September **NEW**



OMNI PACK

Bursting with pops of citrus, the Omni Pack features a restorative palette of radiant hues. A fresh color drop that bridges summer and fall seasons, this lively assortment works across high-impact activities and low-key leisure alike.

KAWANA

1123163 IFGB

Men's

Ice Flow / Goblin Blue

Avail. September **NEW**



CLIFTON 8

1119393 NCBDB

Men's

Nimbus Cloud /

Blanc de Blanc

Avail. September **NEW**



SOLIMAR

1123074 BDBW

Men's

Blanc de Blanc / White

Avail. September **NEW**



ORA LUXE

1134150 FAYW

Unisex

Fiesta / Amber Yellow

Avail. September **NEW**







A collection of **our most responsive up-tempo shoes, FLY** continues to defy what's possible when you run in **lightweight cushion**. These shoes were made for up-tempo and easy miles alike. FLY includes models inspired by the weightless sensation of flight and provides **ample cushion at any pace**. FLY knows no limits.

MACH 5

LEARN TO FLY. EVERY DAY.

GEOMETRY	W 27mm heel 22mm forefoot
	M 29mm heel 24mm forefoot
WEIGHTS	W 6.8 oz. 193g
	M 8.2 oz. 232g
SIZES	W 5-11(B), WIDE 5-11(D)
	M 7-13, 14(D), WIDE 7-13, 14(2E)
PRICING	\$140 H057

The lovechild of Mach 4 and Mach Supersonic, this lively pavement pounder is built for performance and ready to race. Sporting a **stripped back creel mesh upper** and **lay-flat tongue**, the new **Mach 5** delivers a snappier ride with **PROFLY's stacked midsole** setup, offering a lightweight, responsive foam directly underfoot and rubberized EVA below.

How it's different: It has a little more "oomph" behind it—both in performance and ride characteristics.

Why you'll love it: This up-tempo ride was designed to keep your feet feeling fresh, no matter the tempo.

WOMEN

COMMS COLOR

1127894 CPPF

Camellia /
Peach Parfait

Avail. June **NEW**



1127894 BCSTL

Black / Castlerock

Avail. June **NEW**



1136678 BCSTL

Black / Castlerock WIDE

Avail. June **NEW**

1127894 BLSSN

Baby Lavender /
Summer Song

Avail. June **NEW**



1127894 WSBB

White / Scuba Blue

Avail. June **NEW**



1127894 WCPP

White / Copper

Avail. June **NEW**



ROAD ZEST PACK *

1127894 EPSB

Evening Primrose /
Scuba Blue

Avail. September **NEW**

* See p.39.



MEN

COMMS COLOR

1127893 MSPBL

Mountain Spring /
Puffin's bill

Avail. June **NEW**



1127893 BCSTL

Black / Castlerock

Avail. June **NEW**



1136677 BCSTL

Black / Castlerock WIDE

Avail. June **NEW**

1127893 RYEP

Radiant Yellow /
Evening Primrose

Avail. June **NEW**



1127893 WSBB

White / Scuba Blue

Avail. June **NEW**



1127893 WCPP

White / Copper

Avail. June **NEW**



ROAD ZEST PACK *

1127893 EPSB

Evening Primrose /
Scuba Blue

Avail. September **NEW**

* See p.39.



UPPER

- Vegan
- Single layer creel jacquard engineered mesh
- Lay-flat gusseted tongue construction
- Articulated heel collar construction



MIDSOLE

- All-new lightweight, resilient foam
- PROFLY™+ construction
- Molded EVA sockliner



OUTSOLE

- Rubberized EVA outsole





CARBON X 3

HYPER-SUPPORTIVE. HYPER-PROPULSIVE. HYPERSPEED.

GEOMETRY	W 30mm heel 25mm forefoot
	M 32mm heel 27mm forefoot
WEIGHTS	W 6.6 oz. 188g
	M 7.8 oz. 222g
SIZES	W 5-11(B)
	M 7-13, 14(D)
PRICING	\$200 H501

Delivering an even more propulsive ride than its predecessor through an energized new foam midsole, the new **Carbon X 3** launches off the line with a brand new upper. Reworked with a **premium performance knit** for improved fit, this endurance racer is engineered with the same responsive, **carbon fiber plate** and **aggressive Meta-Rocker**. A formidable competitor, this performance shoe is finished with bold, asymmetrical coloring for a statement-making finish.

How it's different: It's been reenergized with a new foam midsole and a premium, performance knit upper.

Why you'll love it: Same propulsive speed, more secure fit.



UPPER

- Vegan
- Breathable engineered knit
- Integrated knit tongue
- Silicone gloss print logo
- Extended heel pull



MIDSOLE

- All-new lightweight, resilient foam and ProFlyX™ construction
- Carbon fiber plate
- Molded EVA sockliner
- Early stage Meta-Rocker



OUTSOLE

- Rubberized EVA

WOMEN

1123193 PPSSG

Peach Parfait /
Summer Song
Avail. June **NEW**



1123193 BWHT

Black / White
Avail. June **NEW**



ROAD ZEST PACK*

1123193 EPSB

Evening Primrose /
Scuba Blue
Avail. September **NEW**
*See p.39.



1123193 BSEP

Billowing Sail /
Evening Primrose
Avail. June



MEN

123192 MSPBL

Mountain Spring /
Puffin's Bill
Avail. June **NEW**



1123192 BWHT

Black / White
Avail. June **NEW**



ROAD ZEST PACK*

1123192 EPSB

Evening Primrose /
Scuba Blue
Avail. September **NEW**
*See p.39.



1123192 BSEP

Billowing Sail /
Evening Primrose
Avail. June



ROCKET X

LAUNCH OFF THE LINE

GEOMETRY U 30mm heel 25mm forefoot

WEIGHTS U 7.4 oz. 210g

SIZES U 5/6-12/13, 13/14, 14/15 M/W

PRICING \$200 H501

Built for race day, the **Rocket X** utilizes a **carbon-fiber plate** designed to deliver a fast, efficient and propulsive ride. Made with **ultralight foam**, this energetic racing shoe has a **breathable mesh upper** and limited rubber coverage on the outsole, all designed to keep it ultra-light.

Why you'll love it: Get ready to take off with one of our softest, lightest foams and a propulsive carbon fiber plate.



UPPER

- Breathable mesh
- Anatomical tongue construction



MIDSOLE

- Compression molded EVA foam
- Carbon fiber plate
- Early stage Meta-Rocker



OUTSOLE

- Zonal rubber

UNISEX

ROAD ZEST PACK *

1113532 BEPR

Black / Evening Primrose

Avail. September **NEW**

*See p.39.



1113532 BGEPR

Blue Glass /

Evening Primrose

Avail. June



CIELO X MD

LIGHTWEIGHT. PROPULSIVE. EXHILARATING.

GEOMETRY U 11mm heel 7mm forefoot

WEIGHTS U 4.5 oz. 128g

SIZES U 3.5/5 - 12/13.5, 13/14.5,
14/15.5 M/W

PRICING \$160 H058

When ripping around the track at dizzying speeds, a **fast spike** is a prerequisite for performance. Engineered with a **propulsive carbon fiber plate** and designed in accordance with World Athletics' guidelines, the **Cielo X MD** is geared for middle distances (800m-3K). Combined with HOKA's lightest performance foam, this **responsive race spike** delivers a snappy ride in under 4.5 ounces.

Why you'll love it: More cushioning than we've ever put in a spike, plus HOKA's first spike with a carbon fiber plate. It's all kinds of amazing.



UPPER

- Engineered mesh
- Breathable fast-dry performance build
- Ventilated air flow design
- Engineered mesh tongue



MIDSOLE

- Non-molded EVA sockliner
- CMEVA midsole
- Carbon fiber plate
- Early stage Meta-Rocker



OUTSOLE

- Pebax® spike plate with 4 spikes

UNISEX

1123151 BGRYL

Blue Glass /
Radiant Yellow
Avail. June



CIELO X LD

LIGHTWEIGHT. PROPULSIVE. EXHILARATING.

GEOMETRY U 11mm heel 7mm forefoot

WEIGHTS U 4.5 oz. 128g

SIZES U 3.5/5-12/13.5, 13/14.5,
14/15.5 M/W

PRICING \$160 H058

When ripping around the track at dizzying speeds, a **fast spike** is a prerequisite for performance. Engineered with a **propulsive carbon fiber plate** and designed in accordance with World Athletics' guidelines, the **Cielo X LD** is equipped for longer range distances (3K-10K). Combined with HOKA's lightest performance foam, this **responsive race spike** delivers a snappy ride in under 4 ounces.

Why you'll love it: More cushioning than we've ever put in a spike, plus HOKA's first spike with a carbon fiber plate. It's all kinds of amazing.

UNISEX

1123097 RYCM

Radiant Yellow /
Camellia
Avail. June



UPPER

- Engineered mesh
- Breathable fast-dry performance build
- Ventilated air flow design
- Engineered mesh tongue



MIDSOLE

- Non-molded EVA sockliner
- CMEVA midsole
- Carbon fiber plate
- Early stage Meta-Rocker



OUTSOLE

- Pebax® spike plate with 4 spikes





ROAD ZEST PACK

Taking HOKA styling to bold new heights, this color blocked collection injects three road-tested icons with prismatic new hues. Built to pop on-foot, these pavement pounders deliver core performance features in an envelope-pushing palette.

MACH 5

GEOMETRY	W 27mm heel 22mm forefoot
	M 29mm heel 24mm forefoot
WEIGHTS	W 6.8 oz. 193g
	M 8.2 oz. 232g
SIZES	W 5-11(B)
	M 7-13, 14(D)
PRICING	\$140 H057

1127894 EPSB
Women's
Evening Primrose /
Scuba Blue
Avail. September **NEW**



1127893 EPSB
Men's
Evening Primrose /
Scuba Blue
Avail. September **NEW**



CARBON X 3

GEOMETRY	W 27mm heel 22mm forefoot
	M 29mm heel 24mm forefoot
WEIGHTS	W 7.6 oz. 216g
	M 9.3 oz. 264g
SIZES	W 5-11(B)
	M 7-13, 14(D)
PRICING	\$200 H501

1123193 EPSB
Women's
Evening Primrose /
Scuba Blue
Avail. September **NEW**



1123192 EPSB
Men's
Evening Primrose /
Scuba Blue
Avail. September **NEW**



ROCKET X

GEOMETRY	U 30mm heel 25mm forefoot
WEIGHTS	U 7.4 oz. 210g
SIZES	U 5/6-12/13, 13/14, 14/15 M/W
PRICING	\$200 H501

1113532 BEPR
Unisex
Black / Evening Primrose
Avail. September **NEW**





SKY is a groundbreaking mountain footwear category ready for trail adventures. An against-the-grain approach to **lightweight hiking boots, trail runners** and **all-terrain shoes**, this category was built to help you touch the sky. These shoes have **cushion, traction and support** so you can traverse the most rugged landscapes at any speed. Complete with trail models and all-terrain shoes, this category performs no matter how far or high the trail leads. **SKY** empowers you to reach the peak.



MAFATE SPEED 4

RESPONSIVE CUSHIONING FOR TOUGH TERRAIN

GEOMETRY	W 31mm heel 27mm forefoot
	M 33mm heel 29mm forefoot
WEIGHTS	W 8.5 oz. 241g
	M 10.4 oz. 295g
SIZES	W 5-11 (B)
	M 7-13, 14 (D)
PRICING	\$185 H579

A pinnacle product for technical trail, the **Mafate Speed 4** makes its debut, distilling what we've seen in the EVO Mafate and Mafate Speed. The same lines are here, just updated with new textiles and construction, including a breathable, **single layer jacquard mesh** and **two-part PROFLY™ midsole** with our lightest, most responsive HOKA foam just underfoot.

How it's different: The DNA hasn't changed dramatically; we've just made the Mafate lighter and more comfortable to enhance your technical trail running experience.

Why you'll love it: Built for the long haul, this fourth iteration is everything you love about the Mafate Speed, just leveled up.



UPPER

- Vegan
- Single layer woven jacquard mesh
- Dynamic tongue and vamp
- Rubber toe cap for support and protection
- Lay-flat gusseted tongue construction
- Bolstered heel collar construction



MIDSOLE

- All-new lightweight, resilient foam
- PROFLY™+ construction



OUTSOLE

- Vibram® Megagrip with Litebase construction and Traction Lug
- 5mm lugs

WOMEN

COMMS COLOR

1131056 DTWGR

Deep Teal /
Water Garden
Avail. August **NEW**



1131056 CPPF

Camellia /
Peach Parfait
Avail. August **NEW**



MEN

COMMS COLOR

1129930 TFST

Thyme / Fiesta
Avail. August **NEW**



1129930 PBSSN

Puffin's Bill /
Summer Song
Avail. August **NEW**





TECTON X

GRIPPY. PROPULSIVE. ASSERTIVE.

GEOMETRY	W 30mm heel 25mm forefoot
	M 32mm heel 27mm forefoot
WEIGHTS	W 6.9 oz. 196g
	M 8.5 oz. 240g
SIZES	W 5-11 (B)
	M 7-13, 14 (D)
PRICING	\$200 H501

Coined after the earth's tectonic plates, which inspired its parallel carbon fiber plate design, the **Tecton X** is poised to unleash a seismic shift in trail running. Built for speed and bolstered by a **Vibram® Megagrip with Litebase construction** outsole for traction, the **ProFlyX™** midsole merges a light, **responsive foam** base and **ultra-soft foam** underfoot. HOKA's first trail shoe to incorporate propulsive, parallel **carbon fiber plates**, the Tecton X is finished with single-layer jacquard engineered mesh for ultimate foot-hugging comfort.

Why you'll love it: Carbon-fiber propulsion meets HOKA trail innovation.



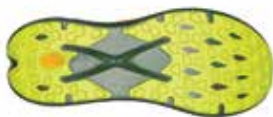
UPPER

- Engineered jacquard mesh
- Recycled content polyester laces
- Ghillie lacing system
- Protective toe rand



MIDSOLE

- Vegan
- Molded EVA sockliner
- Carbon fiber plates
- Early stage Meta-Rocker
- ProFlyX™ construction



OUTSOLE

- 4mm lug
- Vibram® Megagrip with Litebase
- Zonal rubber placement

WOMEN

1123162 DTWGR

Deep Teal /
Water Garden
Avail. June **NEW**



TRAIL ZEST PACK *

1123162 SBDP

Scuba Blue /
Diva Pink
Avail. October **NEW**
*See p.57.



MEN

1123161 TFST

Thyme / Fiesta
Avail. June **NEW**



TRAIL ZEST PACK *

1123161 SBDP

Scuba Blue /
Diva Pink
Avail. October **NEW**
*See p.57.





SPEEDGOAT 5

GRIPPY. CUSHIONED. TRAILBLAZER.

GEOMETRY	W 31mm heel 27mm forefoot
	M 33mm heel 29mm forefoot
WEIGHTS	W 8.0 oz. 226g
	M 9.7 oz. 276g
SIZES	W 5-11, 12(B); WIDE 5-11, 12(D)
	M 7-13, 14, 15(D); WIDE 7-13, 14, 15(2E)
PRICING	\$155 H0528



UPPER

- Vegan
- GORE-TEX Leaf membrane bootie construction
- Double-layer jacquard engineered mesh
- Protective toe rand
- Lay-flat gusseted tongue construction
- Bolstered heel collar construction



MIDSOLE

- Molded EVA sockliner
- CMEVA midsole
- Late stage Meta-Rocker



OUTSOLE

- Vibram® Megagrip with Traction Lug
- 5mm lugs

A workhorse designed for technical trails, the Speedgoat returns with **less weight** and **more traction** than ever before. A new shoe from outsole to laces, this trail beast is updated with **Vibram® Megagrip with Traction Lug** for enhanced grip on loose soil. Retaining the same stack height and rocker profile, the **Speedgoat 5** employs a lighter midsole compound and heartier, double layer jacquard mesh to inspire confidence on any terrain.

How it's different: Think less weight and more traction. (A half ounce lighter, to be exact.)

Why you'll love it: Everything you love about the Speedgoat, leveled up.

WOMEN

1123158 FFCM

Festival Fuschia /
Camellia

Avail. June **NEW**

1123160 FFCM

Festival Fuschia /
Camellia WIDE

Avail. June **NEW**



1123158 ELMR

Elderberry / Lilac Marble

Avail. June **NEW**



TRAIL ZEST PACK *

1123158 SBBK

Scuba Blue / Black

Avail. October **NEW**

*See p. 57.



1123158 BCCML

Blue Coral / Camellia

Avail. June

1123160 BCCML

Blue Coral /
Camellia WIDE

Avail. June



MEN

1123157 TFST

Thyme / Fiesta

Avail. June **NEW**

1123159 TFST

Thyme / Fiesta WIDE

Avail. June **NEW**



TRAIL ZEST PACK *

1123157 SBBK

Scuba Blue / Black

Avail. October **NEW**

*See p. 57.



1123157 BCEP

Blue Coral /
Evening Primrose

Avail. June

1123159 BCEP

Blue Coral /
Evening Primrose WIDE

Avail. June



1123157 FRYL

Fiesta /
Radiant Yellow

Avail. June

1123159 FRYL

Fiesta /
Radiant Yellow WIDE

Avail. June



SPEEDGOAT 5 GTX

GRIPPY. CUSHIONED. TRAILBLAZER.

GEOMETRY	W 30mm heel 26mm forefoot
	M 32mm heel 28mm forefoot
WEIGHTS	W 12.9 oz. 367g
	M 12.9 oz. 367g
SIZES	W 5-11(B)
	M 7-13, 14(D)
PRICING	\$170 H009

A workhorse for sloppy, wet conditions, the **Speedgoat 5** returns with a brand-new upper and enhanced moisture management in the way of a **GORE-TEX** membrane. Grounded in the same **Vibram® Megagrip with Traction Lug** for increased grip on loose soil, this trail icon employs a foot-cradling heel bolster, rubber toe cap, and gusseted tongue to keep trail debris at bay.

How it's different: It's everything you love about the Speedgoat 5, now updated with waterproof versatility.

Why you'll love it: This trailblazer is a weather-ready traction beast.



UPPER

- Vegan
- GORE-TEX Leaf membrane bootie construction
- Double-layer jacquard engineered mesh
- Protective toe rand
- Lay-flat gusseted tongue construction
- Bolstered heel collar construction



MIDSOLE

- CMEVA midsole
- Late stage Meta-Rocker
- Molded EVA sockliner



OUTSOLE

- Vibram® Megagrip with Traction Lug
- 5mm lugs

WOMEN

COMMS COLOR

1127913 DTBC

Deep Teal /
Black

Avail. June **NEW**



1127913 BBLC

Black / Black

Avail. June **NEW**



MEN

COMMS COLOR

1127912 FTHY

Fiesta / Thyme

Avail. June **NEW**



1127912 BBLC

Black / Black

Avail. June **NEW**



TORRENT 2

FAST. FLUID. FUN.

GEOMETRY	W 21mm heel 16mm forefoot
	M 23mm heel 18mm forefoot
WEIGHTS	W 7.6 oz. 215g
	M 9.3 oz. 264g
SIZES	W 5-11(B)
	M 7-13, 14, 15(D)
PRICING	\$120 H056

Utilizing a **PROFLY™ construction** designed for a forgiving landing and exciting toe-off, the **Torrent 2** is built for **lightweight performance**. Designed with an engineered mesh upper, the Torrent 2 employs recycled **Unifi REPREEVE® yarn** derived from post-consumer waste plastic.

Why you'll love it: Stay sticky and feel light on your feet with the nimble Torrent 2.



UPPER

- Vegan
- Engineered mesh with recycled polyester fibers
- Reinforced overlays
- Breathable recycled content lining mesh



MIDSOLE

- PROFLY™ construction
- Early stage Meta-Rocker



OUTSOLE

- Multidirectional lugs
- Sticky rubber

WOMEN

1110497 SBBK

Scuba Blue / Black
Avail. October **NEW**



1110497 FFIR

Festival Fuchsia / Ibis Rose
Avail. June



1110497 PIBT

Purple Impression / Butterfly
Avail. June



1110497 CCLL

Castlerock / Camellia
Avail. June



1110497 RTCN

Real Teal / Cantaloupe
Avail. June



MEN

1110496 SBBK

Scuba Blue / Black
Avail. October **NEW**



1110496 OSFS

Outer Space / Fiesta
Avail. June



1110496 BCEP

Blue Coral / Evening Primrose
Avail. June



1110496 RTHM

Real Teal / Harbor Mist
Avail. June





ZINAL

FLY ON THE TRAILS

GEOMETRY	W 21mm heel 17mm forefoot
	M 22mm heel 18mm forefoot
WEIGHTS	W 7.0 oz. 199g
	M 8.5 oz. 242g
SIZES	W 5-11 (B)
	M 7-13, 14 (D)
PRICING	\$160 H058

A responsive trail runner geared for shorter distances, the nimble **Zinal** trail shoe delivers the perfect blend of **speed and agility**. Made from recycled yarn, a stripped-back mesh upper has been designed with a **gusseted tongue** to keep debris out.

Why you'll love it: Durability, low weight, and traction equals one fast shoe.

WOMEN

1119400 FFBB

Festival Fuchsia /
Bellwether Blue
Avail. June **NEW**



TRAIL ZEST PACK *

1119400 SBDP

Scuba Blue / Diva Pink
Avail. October **NEW**
*See p.57.



MEN

1119399 FBOL

Fiesta /Black Olive
Avail. June **NEW**



TRAIL ZEST PACK *

1119399 SBBK

Scuba Blue / Black
Avail. October **NEW**
*See p.57.



UPPER

- Vegan
- Mesh upper derived from recycled content
- Gusseted tongue
- Toe bumper for protection
- Molded EVA sockliner



MIDSOLE

- PROFLY™ construction
- Early stage Meta-Rocker



OUTSOLE

- Vibram® Megagrip with Litebase construction
- 4mm lugs

STINSON ATR 6

MAX CUSHION FROM STREET TO SUMMIT

GEOMETRY	W 34mm heel 29mm forefoot
	M 37mm heel 32mm forefoot
WEIGHTS	W 9.8 oz. 278g
	M 10.9 oz. 310g
SIZES	W 5-11(B)
	M 7-13, 14, 15(D)
PRICING \$170 H009	

The sixth edition of a HOKA legacy shoe, the **Stinson ATR 6** continues to deliver **versatile comfort** both on the road and off the grid. Now with **less weight and more stability**, the Stinson ATR 6 reliably delivers a cushy underfoot experience and high volume stack height. Aggressive aesthetic meets unparalleled performance on all terrain in the Stinson ATR 6.

Why you'll love it: This high-impact trail shoe has low-impact on the environment.



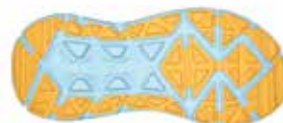
UPPER

- Vegan
- Engineered mesh with recycled polyester fibers
- Anatomical support wings
- TPU reinforced toe cap



MIDSOLE

- High-volume compression molded EVA
- Broad midsole
- Late stage Meta-Rocker



OUTSOLE

- Broad, closely spaced lugs
- Zonal rubber
- 4mm lugs

WOMEN

1110507 LMBG

Lilac Marble /
Blue Graphite
Avail. June **NEW**



1110507 OSBG

Outer Space /
Blue Glass
Avail. June



MEN

1110506 BGSS

Blue Graphite /
Summer Song
Avail. June **NEW**



1110506 BCBT

Blue Coral /
Butterfly
Avail. June



CHALLENGER ATR 6

STREET-APPROVED. TRAIL-TESTED.

GEOMETRY	W 26mm heel 21mm forefoot
	M 29mm heel 24mm forefoot
WEIGHTS	W 8.1 oz. 229g
	M 9.8 oz. 279g
SIZES	W 5-11, 12 (B); WIDE 5-11 (D)
	M 7-13, 14, 15 (D); WIDE 7-13, 14(2E)
PRICING	\$140 H057

The **Challenger ATR 6** is dynamically designed for **versatile trail traction** in one all-terrain package. Developed with broad, closely spaced zonal lugs, the Challenger ATR 6's outsole is designed to deliver **smooth transitions** from one surface to another, while the upper utilizes **recycled yarn** derived from post-consumer waste plastic.

Why you'll love it: Smooth trail-to-road transitions mean more exploration is possible—and that's a good thing.



UPPER

- Breathable mesh



MIDSOLE

- Compression molded EVA foam
- Early stage Meta-Rocker



OUTSOLE

- Durable zonal rubber
- 4mm lugs

WOMEN

1106512 FFPP

Festival Fuchsia /
Peach Parfait
Avail. June **NEW**



1106512 ELMR

Elderberry /
Lilac Marble
Avail. June **NEW**



1106512 CCLL

Castlerock / Camellia
Avail. June

1106514 CCLL

Castlerock /
Camellia WIDE
Avail. June



1106512 BGBGL

Blue Graphite /
Blue Glass
Avail. June



MEN

1106510 TFST

Thyme / Fiesta
Avail. June **NEW**

1106513 TFST

Thyme / Fiesta WIDE
Avail. June **NEW**



1106510 PBSH

Puffin's Bill /
Sharkskin
Avail. June **NEW**



1106510 OSRY

Outer Space /
Radiant Yellow
Avail. June

1106513 OSRY

Outer Space /
Radiant Yellow WIDE
Avail. June



1106510 BTYM

Black / Thyme
Avail. June



CHALLENGER ATR 6 GTX

ALL SEASON. ALL TERRAIN.

GEOMETRY	W 26mm heel 21mm forefoot
	M 29mm heel 24mm forefoot
WEIGHTS	W 9.0 oz. 256g
	M 10.9 oz. 309g
SIZES	W 5-11, 12 (B)
	M 7-13, 14, 15 (D)
PRICING	\$150 H008

Challenge the trail in the versatile and all-conditions-capable **Challenger ATR 6 GTX**. From trail running to smooth street strides, the Challenger ATR 6 GTX is dynamically designed for traction on both, using its **distinctive outsole** and zonal construction to **optimize grip**.

Why you'll love it: The Challenger ATR 6 GTX takes you anywhere, no matter the conditions.



UPPER

- Vegan
- GORE-TEX bootie
- Unifi REPREVE® recycled yarn
- Toe rand
- Gusseted tongue
- Recycled poly laces
- Mesh tongue from recycled materials



MIDSOLE

- Compression molded EVA
- Early stage Meta-Rocker



OUTSOLE

- Zonal rubber
- 4mm lugs

WOMEN

1116878 BBLC

Black / Black
Avail. June **NEW**



1116878 BCCML

Blue Coral / Camellia
Avail. June



MEN

1116876 BBOLV

Black / Black Olive
Avail. June **NEW**



1116876 OSBT

Outer Space / Butterfly
Avail. June





TRAIL ZEST PACK

Taking HOKA styling to bold new heights, this color blocked collection injects four trail-tested favorites with prismatic new hues. Built to pop on-foot, these off-road icons deliver core performance features in an envelope-pushing palette.

TECTON X

GEOMETRY	W 27mm heel 22mm forefoot
	M 30mm heel 25mm forefoot
WEIGHTS	W 6.9 oz. 196g
	M 8.5 oz. 240g
SIZES	W 5-11(B)
	M 7-13, 14(D)
PRICING	\$200 H501

1123162 SBDP

Women's
Scuba Blue / Diva Pink
Avail. October **NEW**



1123161 SBDP

Men's
Scuba Blue / Diva Pink
Avail. October **NEW**



ZINAL

GEOMETRY	W 27mm heel 22mm forefoot
	M 29mm heel 24mm forefoot
WEIGHTS	W 7.0 oz. 199g
	M 8.5 oz. 242g
SIZES	W 5-11(B)
	M 7-13, 14(D)
PRICING	\$160 H058

1119400 SBDP

Women's
Scuba Blue / Diva Pink
Avail. October **NEW**



1119399 SBBK

Men's
Scuba Blue / Black
Avail. October **NEW**



SPEEDGOAT 5

GEOMETRY	W 27mm heel 22mm forefoot
	M 29mm heel 24mm forefoot
WEIGHTS	W 8.0 oz. 226g
	M 9.7 oz. 276g
SIZES	W 5-11(B); 5-11, 12 (D) WIDE
	M 7-13, 14, 15(D); 7-13, 14, 15(2E) WIDE
PRICING	\$155 H528

1123158 SBBK

Women's
Scuba Blue / Black
Avail. October **NEW**



1123157 SBBK

Men's
Scuba Blue / Black
Avail. October **NEW**



TORRENT 2

GEOMETRY	W 27mm heel 22mm forefoot
	M 29mm heel 24mm forefoot
WEIGHTS	W 7.6 oz. 215g
	M 9.3 oz. 264g
SIZES	W 5-11(B)
	M 7-13, 14, 15(D)
PRICING	\$125 H056

1110497 SBBK

Women's
Scuba Blue / Black
Avail. October **NEW**



1110496 SBBK

Men's
Scuba Blue / Black
Avail. October **NEW**





ANACAPA BREEZE LOW

LIGHT. AIRY. ADDICTIVELY COMFORTABLE.

GEOMETRY	W 28mm heel 22mm forefoot
	M 30mm heel 24mm forefoot
WEIGHTS	W 10.2 oz. 289g
	M 12.4oz. 353g
SIZES	W 5-11(B)
	M 7-13, 14, 15(D)
PRICING	\$155 H577

Back and more breathable than ever, the **Anacapa** returns with an ultra-ventilated upper and the same sharp focus on sustainability. Engineered for warmer climates, the **Breeze** adopts a **100% rPET engineered knit upper** and maintains the same iconic **HUBBLE® heel geometry** and **Vibram® Megagrip outsole** that made its predecessor a trail icon.

How it's different: Engineered for maximal breathability, we've enlisted a ventilated new upper.

Why you'll love it: Count on the same trail-tested comfort, just reworked for warmer temps.



UPPER

- Engineered air mesh with 100% rPET yarns
- Recycled polyester materials in collar, mesh and laces
- Anatomical Achilles construction
- Molded PU sockliner with 50% soybean oil



MIDSOLE

- Compression molded EVA midsole
- Extended heel designed for smooth impact
- Late stage Meta-Rocker



OUTSOLE

- Vibram® Megagrip rubber outsole
- 5mm lugs

WOMEN

COMMS COLOR

1127921 OTPW

Oxford Tan / Peach Whip
Avail. June **NEW**



1127921 OSHM

Outer Space / Harbor Mist
Avail. June **NEW**



1127921 SBAY

Sun Baked / Amber Yellow
Avail. June **NEW**



MEN

COMMS COLOR

1127920 BCSR

Baked Clay / Shortbread
Avail. June **NEW**



1127920 GBOS

Goblin Blue / Outer Space
Avail. June **NEW**



1127920 BBLC

Black / Black
Avail. June **NEW**



ANACAPA MID GTX

FEELS LIKE A SHOE, WANDERS LIKE A BOOT

GEOMETRY	W 28mm heel 22mm forefoot
	M 30mm heel 24mm forefoot
WEIGHTS	W 14.0 oz. 384g
	M 16.0 oz. 453g
SIZES	W 5-11(B)
	M 7-13, 14, 15(D)
PRICING	\$185 H529

A day hiker made with recycled materials, the **Anacapa MID GTX** is a gateway to the great outdoors. Engineered from **lightweight leather** certified by the Leather Working Group, the versatile silhouette employs recycled polyester in the collar, mesh and laces. This innovative style applies signature HOKA **extended-heel geometry** designed for a smooth ride on the trails.

Why you'll love it: The Anacapa brings ultimate comfort to everyday explorations.



UPPER

- PFC-Free water repellency treatment
- Leather Working Group gold-rated waterproof nubuck leather
- Quick lace hook
- Gusseted tongue
- Recycled polyester materials in collar, mesh and laces
- GORE-TEX footwear fabric with recycled textile
- Molded PU sockliner derived from 50% soybean oil



MIDSOLE

- Compression molded EVA midsole
- Extended heel designed for smooth impact
- Late stage Meta-Rocker



OUTSOLE

- Vibram® Megagrip rubber
- 5mm lugs

WOMEN

1119372 DLMR

Dune / Lilac Marble
Avail. June **NEW**



1119372 MSHM

Mountain Spring / Harbor Mist
Avail. June **NEW**



1119372 RTOS

Real Teal / Outer Space
Avail. June



1119372 HSCM

Hot Sauce / Cherry Mahogany
Avail. June



1119372 EGWN

Elderberry / Grape Wine
Avail. June



MEN

1122018 CHMS

Castlerock / Harbor Mist
Avail. June **NEW**



1122018 RTOS

Real Teal / Outer Space
Avail. June



1122018 TRYL

Thyme / Radiant Yellow
Avail. June



1122018 BBLC

Black / Black
Avail. June



ANACAPA LOW GTX

FEELS LIKE A SHOE, WANDERS LIKE A BOOT

GEOMETRY	W 28mm heel 22mm forefoot
	M 30mm heel 24mm forefoot
WEIGHTS	W 12.0 oz. 335g
	M 14.0 oz. 397g
SIZES	W 5-11(B)
	M 7-13, 14, 15(D)
PRICING	\$170 H058

A day hiker made with recycled materials, the **Anacapa Low GTX** is a **low-profile** take on the Anacapa Mid GTX. Engineered from **lightweight leather** certified by the Leather Working Group, the versatile silhouette employs recycled polyester in the collar, mesh and laces. This innovative style applies signature HOKA **extended-heel geometry** designed for a smooth ride on the trails.

Why you'll love it: The Anacapa brings ultimate comfort to everyday explorations.



UPPER

- PFC-Free water repellency treatment
- Leather Working Group Gold-rated waterproof nubuck leather
- Gusseted tongue
- Recycled polyester materials in collar, mesh and laces
- GORE-TEX footwear fabric with recycled textile
- Molded PU sockliner derived from 50% soybean oil



MIDSOLE

- Compression molded EVA midsole
- Extended heel designed for smooth impact
- Late stage Meta-Rocker



OUTSOLE

- Vibram® Megagrip rubber
- 5mm lugs

WOMEN

1119373 MSSS

Mountain Spring /
Summer Song
Avail. June **NEW**



1119373 GWEL

Grape Wine /
Elderberry
Avail. June



1119373 CMHS

Cherry Mahogany /
Hot Sauce
Avail. June



MEN

1122017 OSMS

Outer Space /
Mountain Spring
Avail. June **NEW**



1122017 DBRYL

Duffel Bag /
Radiant Yellow
Avail. June



1122017 CSHR

Castlerock / Sharkskin
Avail. June



1122017 BBLC

Black / Black
Avail. June



KAHA 2 GTX

CUSHIONED. DURABLE. ADVENTUROUS.

GEOMETRY	W 30mm heel 24mm forefoot
	M 32mm heel 26mm forefoot
WEIGHTS	W 15.6 oz. 443g
	M 18.8 oz. 533g
SIZES	W 5-11(B)
	M 7-13, 14, 15(D)
PRICING	\$240 H021



UPPER

- Waterproof nubuck leather from certified Leather Working Group Gold-rated tannery
- Quick-lace metal top hooks
- Abrasion resistant toecap and heel
- Waterproof membrane bootie construction
- GORE-TEX footwear fabric with recycled textile
- Water-repellant materials
- Recycled content mesh and recycled polyester laces
- Anatomical Achilles construction with heel pull tab
- Topically applied PFC-free water repellency treatment



MIDSOLE

- 2-density CMEVA midsole with HUBBLE® and SwallowTail™ design
- Late stage Meta-Rocker with integrated flex grooves
- Rubberized EVA midsole
- Molded PU sockliner with 50% soybean oil



OUTSOLE

- Vibram® Megagrip rubber with Traction Lug design
- 5mm lugs

With a remarkable weight-to-cushion ratio, the **Kaha 2 GTX** delivers peak performance with peak plushness. Updated with a **HUBBLE® heel** with SwallowTail™ geometry, this durable hiker features **Vibram® Megagrip with Traction Lug** for increased ground contact. Consciously crafted, this trailblazing silhouette employs **GORE-TEX** footwear fabric with recycled textile.

How it's different: Sustainably-minded materials. Enhanced cushion and durability.

Why you'll love it: It's maximal "HOKA" cushion for the trail. Think Bondi, but for hiking.

WOMEN

COMMS COLOR

1123156 BCBGR

Blue Coral /
Blue Graphite

Avail. June **NEW**



1123156 CESH

Castlerock /
Coastal Shade

Avail. June **NEW**



1123156 SBBCL

Sun Baked / Baked Clay

Avail. June **NEW**



MEN

COMMS COLOR

1123155 BCBGR

Blue Coral /
Blue Graphite

Avail. June **NEW**



1123155 DBRYL

Duffel Bag / Radiant
Yellow

Avail. June **NEW**



1123155 BBLC

Black / Black

Avail. June **NEW**



KAHA 2 LOW GTX

CUSHIONED. DURABLE. ADVENTUROUS.

GEOMETRY	W 31mm heel 25mm forefoot
	M 33mm heel 27mm forefoot
WEIGHTS	W 13.8 oz. 390g
	M 16.8 oz. 475g
SIZES	W 5-11(B)
	M 7-13, 14, 15(D)
PRICING	\$220 H011



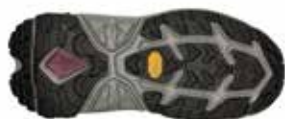
UPPER

- Waterproof nubuck leather from certified Leather Working Group Gold-rated tannery
- Metal lacing hardware
- Abrasion resistant toecap and heel
- Waterproof membrane bootie construction
- GORE-TEX footwear fabric with recycled textile
- Water-repellant materials
- Recycled content mesh and recycled polyester laces
- Anatomical Achilles construction with heel pull tab
- Topically applied PFC-free water repellency treatment



MIDSOLE

- 2-density CMEVA midsole with HUBBLE® and SwallowTail™ design
- Late stage Meta-Rocker with integrated flex grooves
- Rubberized EVA midsole
- Molded PU sockliner with 50% soybean oil



OUTSOLE

- Vibram® Megagrip rubber with Traction Lug design
- 5mm lugs

With a remarkable weight-to-cushion ratio, the **Kaha Low 2 GTX** delivers peak performance with peak plushness. Updated with a **HUBBLE® heel** with SwallowTail™ geometry, this low-cut hiker features **Vibram® Megagrip with Traction Lug** for increased ground contact. Mindfully made, this trailblazing silhouette employs **GORE-TEX** footwear fabric with recycled textile.

How it's different: Sustainably-minded materials. Enhanced cushion and durability.

Why you'll love it: It's maximal "HOKA" cushion for the trail. Think Bondi, but for hiking.

WOMEN

COMMS COLOR

1123191 GWCS

Grape Wine /
Coastal Shade
Avail. June **NEW**



1123191 SBCRL

Sharkskin / Blue Coral
Avail. June **NEW**



MEN

COMMS COLOR

1123190 TRYL

Thyme / Radiant Yellow
Avail. June **NEW**



1123190 SBCRL

Sharkskin / Blue Coral
Avail. June **NEW**



1123190 BBLC

Black / Black
Avail. June **NEW**



TENNINE HIKE GTX

HIKE FOREVER

GEOMETRY	W 30mm heel 26mm forefoot
	M 33mm heel 29mm forefoot
WEIGHTS	W 14.7 oz. 416g
	M 17.8 oz. 504g
SIZES	W 5-11 (B)
	M 7-13, 14 (D)
PRICING	\$275 H5731

Part hovercraft and part hiking boot, the **TenNine Hike GTX** offers peak cushioning, durability and traction with an **extended HUBBLE® heel geometry**. Engineered for a **smooth ride**, this bold profile is designed for an efficient heel-to-toe transition. Exceptionally cushioned, this long-distance hiker employs **Vibram® Megagrip with Litebase construction** for **less weight** and **more durability**.

Why you'll love it: A groundbreaking product designed to provide the smoothest ride on the trail.



UPPER

- Water-repellent materials
- Ripstop textile
- Metal lacing hardware
- Rubber toe cap
- 100% rPET lining textile
- GORE-TEX footwear fabric with recycled textile



MIDSOLE

- Trail-tested HOKA HUBBLE® and SwallowTail™ design
- Molded EVA foam
- Late stage Meta-Rocker



OUTSOLE

- Vibram® Megagrip with Litebase construction
- 5mm lugs

WOMEN

1113511 ECSH

Elderberry /
Coastal Shade
Avail. June



MEN

1113510 TEPR

Thyme /
Evening Primrose
Avail. June



1113510 BDGGR

Black /
Dark Gull Gray
Avail. June



TRAIL CODE GTX

DYNAMIC. LIGHTWEIGHT. EXPLORER.

GEOMETRY	W 28mm heel 22mm forefoot
	M 30mm heel 24mm forefoot
WEIGHTS	W 12.7 oz. 361g
	M 15.3 oz. 434g
SIZES	W 5-11(B)
	M 7-13, 14(D)
PRICING	\$185 H529

Honoring the unspoken code of the trail, this day hiker was made for the trail. Grounded in a **HUBBLE® heel** with SwallowTail™ geometry, the **Trail Code** uses a **responsive new foam** for **exceptional cushioning**. Finished with dimensional screen printing to decrease waste and increase durability, this trail all-rounder was made for exploring.

Why you'll love it: It hits the sweet spot between lightweight and cushioned.



UPPER

- 100% rPET ripstop textile
- 3D screen printed overlay
- Waterproof membrane bootie construction
- Quick-lace metal top hooks
- GORE-TEX footwear fabric with recycled textile
- Water-repellant materials
- Recycled content mesh and recycled polyester laces
- Anatomical Achilles construction with heel pull tab
- Topically applied PFC-free water repellency treatment



MIDSOLE

- CMEVA midsole with HUBBLE® and SwallowTail™ design
- Late stage Meta-Rocker
- Molded PU sockliner with 50% soybean oil



OUTSOLE

- Vibram® Megagrip rubber
- 5mm lugs

WOMEN

COMMS COLOR

1123166 BGCS

Blue Glass /
Coastal Shade
Avail. June **NEW**



1123166 SBSH

Sun Baked / Shortbread
Avail. June **NEW**



1123166 BCSTL

Black / Castlerock
Avail. June **NEW**



MEN

COMMS COLOR

1123165 CPOR

Castlerock /
Persimmon Orange
Avail. June **NEW**



1123165 BGBCR

Blue Graphite / Blue Coral
Avail. June **NEW**



1123165 BRVN

Black / Raven
Avail. June **NEW**



SPEEDGOAT 5 MID GTX

GRIPPY. CUSHIONED. TRAILBLAZER.

GEOMETRY	W 30mm heel 26mm forefoot
	M 32mm heel 28mm forefoot
WEIGHTS	W 12.9 oz. 367g
	M 13.1 oz. 373g
SIZES	W 5-11(B)
	M 7-13, 14, 15(D)
PRICING	\$180 H059

A workhorse for sloppy, wet conditions, the **Speedgoat 5 Mid GTX** is built with the same **GORE-TEX** membrane as its lower profile counterpart, along with a soft heel tab to accommodate the Achilles and flexible collar for extra ankle support. Grounded in **Vibram® Megagrip with Traction Lug** for enhanced grip on loose soil, this trail icon employs a foot-cradling heel bolster, rubber toe cap, and gusseted tongue to keep trail debris at bay.

How it's different: The same waterproof versatility of the Speedgoat 5 GTX, just reinforced with a supportive collar.

Why you'll love it: This trailblazer is a weather-ready traction beast.



UPPER

- Vegan
- GORE-TEX Leaf membrane bootie construction
- Double-layer jacquard engineered mesh
- Protective toe rand
- Lay-flat gusseted tongue construction
- Flexible and soft heel tab construction
- Molded heel collar construction



MIDSOLE

- CMEVA midsole
- Late stage Meta-Rocker
- Molded EVA sockliner



OUTSOLE

- Vibram® Megagrip with Traction Lug
- 5mm lugs

WOMEN

COMMS COLOR
1127919 BBCML
Bellwether Blue /
Camellia
Avail. June **NEW**



MEN

COMMS COLOR
1127918 BGAY
Blue Graphite /
Amber Yellow
Avail. June **NEW**



1127918 BBLC
Black / Black
Avail. June **NEW**



HOPARA

SIGNATURE COMFORT BY LAND OR WATER

GEOMETRY	W 27mm heel 22mm forefoot
	M 29mm heel 24mm forefoot
WEIGHTS	W 10.1 oz. 287g
	M 12.0 oz. 342g
SIZES	W 5-11(B)
	M 7-13, 14(D)
PRICING	\$135 H576

On wet or dry terrain alike, the **Hopara** is designed to explore. Employing a synthetic upper with strategic **cutouts for drainage** while still providing a secure lockdown, it includes a neoprene collar for **flexibility and comfort**, plus a quick-lace system. The EVA midsole, **rubberized toe cap** and sticky rubber outsole make the Hopara the key to your next adventure.

Why you'll love it: 4mm multidirectional lugs and a well-draining upper mean more traction through water and dry terrain alike.



UPPER

- Vegan
- Synthetic and neoprene upper
- Gusseted neoprene construction
- Quick-lace system



MIDSOLE

- Rubberized EVA midsole
- Contoured EVA topsole
- Late stage Meta-Rocker



OUTSOLE

- Rubberized toe cap
- 4mm multidirectional lugs
- Broad lug pattern

WOMEN

1106535 CSBCR

Coastal Shade /
Blue Coral
Avail. June



1106535 CELD

Castlerock / Elderberry
Avail. June



1106535 BFCR

Black / Fusion Coral
Avail. June



MEN

1106534 CTHY

Castlerock / Thyme
Avail. June



1106534 BDSD

Black / Dark Shadow
Avail. June



